



electrónica de precisión, s.a.

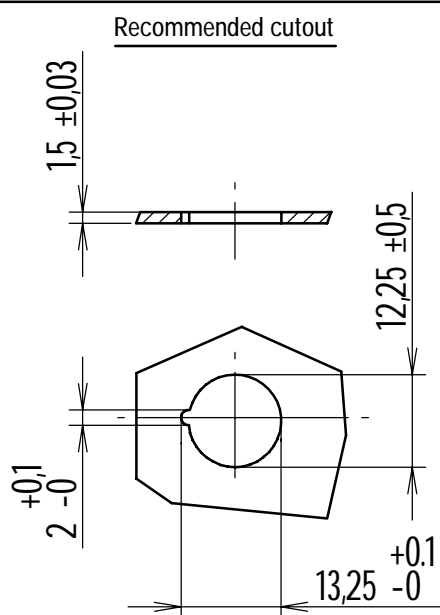
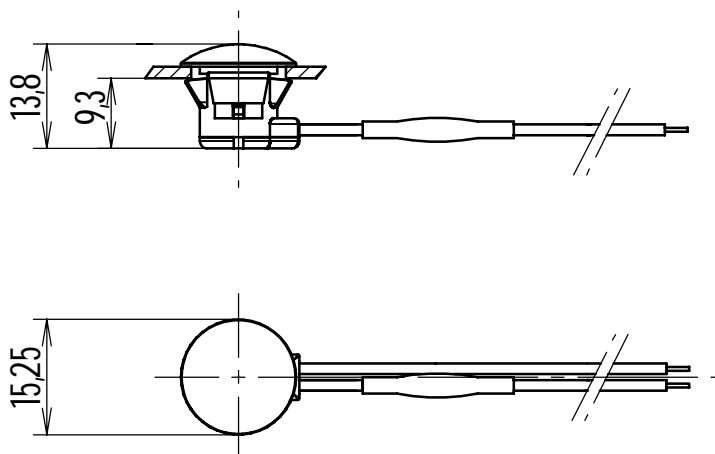
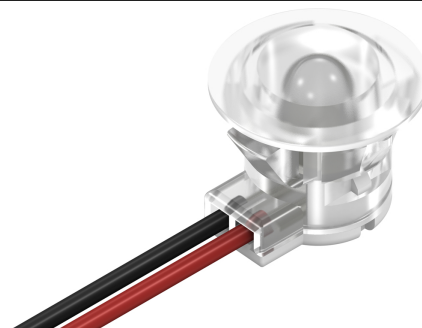
C./ Galileu, 17 Polígono Industrial Can Estella
E-08635 Sant Esteve Sesrovires
BARCELONA

Tel.: +34 93 774 69 10
Fax.: +34 93 774 65 00
e-mail: epsa@edep.com
<http://www.edep.com>



Illumination for Trays

Code 8942212402



Tolerances unless otherwise stated: ± 0.2

Scale: 1:1

This product is an example of our design and production possibilities in the field of illumination. Custom designed for a manufacturer of cigarette selling machines, the initial most important requirements were:

- 1) Low investments in tooling
- 2) Small size; mounted between two panels (distance 10mm)
- 3) Good illumination of the cigarette ejecting tray
- 4) Good resistance to vandalism
- 5) Ready to be connected to 6 Vdc

After to our different proposals, the client ordered us the present product, which meets all requirements. The housing with his robust lens is made of an transparent impact resistant thermoplastic. Introduced though the hole from front side, the unit is fixed by snap-in.

A high brightness light emitting diode (L.E.D.) gives good illumination, even though there is not much space available. Before submit product to client, our laboratory tested all prescribed parameters.